



# Caledonian

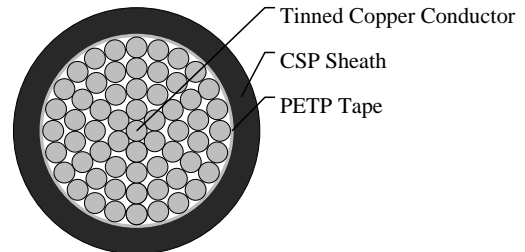
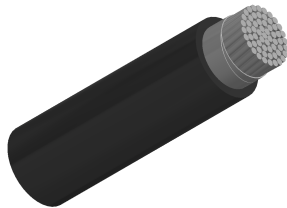
Railway Cables

www.caledonian-cables.com

marketing@caledonian-cables.com

## 650/750V Track Feeder Cables to RT/E/S/21101

RF21101-H01N2-D-650/750V-1G500SCU



### APPLICATIONS

The cables can provide the 450/750 volt DC supply from Traction Substations and Track Paralleling Huts to conductor rails, negative cable connections and where appropriate bonding.

### STANDARDS

NR/PS/ELP/21101 (formerly RT/E/S/21101)

BS 638 Part 4

UND 21027

### VOLTAGE RATING

650/750V

### CABLE CONSTRUCTION

Conductors: Class 5 stranded tinned copper to BS EN 60228:2005 (previously BS6360).

Core wrapping: PETP (Polyethylene Terephthalate).

Sheath: CSP(Chlorosulfonated Polyethylene) type RS4 to BS6899.

H.O.F.R. heat resistant, oil resistant and flame retardant.

### PHYSICAL AND THERMAL PROPERTIES

Minimum Bending Radius: 8 x OD

Operating Temperatures: -25°C to +85°C (during operation); -10°C to +70°C (during installation)

### Electrical Properties

Electrical Characteristics at 20°C:

Maximum DC Conductor Resistance:0.0369Ω/km

Assigned Continuous Current Rating:1200 A

### DIMENSION AND PARAMETERS

No. of Cores × Cross-sectional Area	No./Nominal Diameter of Strands	Nominal Sheath Thickness	Nom. Overall Diameter	Approx. Weight	Polarity / Gland Size
No.×mm <sup>2</sup>	no./mm	mm	mm	kg/km	



**Caledonian**

Railway Cables

[www.caledonian-cables.com](http://www.caledonian-cables.com)

[marketing@caledonian-cables.com](mailto:marketing@caledonian-cables.com)

1 x 500	1769/0.6	4	42.3	5582	negative/50
---------	----------	---	------	------	-------------



Highly Flexible



Impact Resistant



Laid In Ducts



Oil Resistant



Water Resistant